



# 2025 Football Season

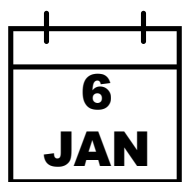
## Key dates and fees

It's a new season at Narrabeen FC! We're proud to say that last year, over 1,250 players wore their #BEENIES jerseys each week with enthusiasm and pride. We're excited to see that number grow even larger this year. As the club evolves, we're counting on your volunteer assistance to help us reach new heights and strive towards our goal of being the best club possible for our members.

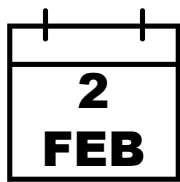
Narrabeen FC is a not-for-profit organisation, run by volunteers a proud section of the Narrabeen Youth Club and caters to all levels of ability and enthusiasm, from Premier League teams to Under 6s. In 2025 NFC will continue to enhance their coaches' training, investing in equipment and facilities, and maintaining a player development program, with clear [registration](#) and [grading](#) procedures so everyone is clear on their responsibilities and expectations.

### KEY DATES

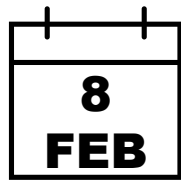
Registration opens



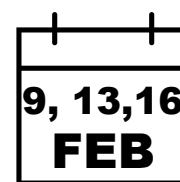
Information day



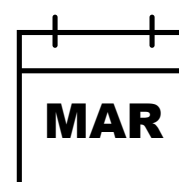
Early bird ends



Grading days



Announcement day



Season starts



Must be completed online  
[www.playfootball.com.au](http://www.playfootball.com.au)

Ask questions and purchase merchandise from the Boondah Reserve canteen

Register by 8 Feb 2025 to guarantee your spot in a team and to be eligible for grading. [Service NSW Active Kids Voucher](#) can be used towards registration fees

Grading is mandatory for all players U11 and over as well as any player wishing to be eligible for performance and development streams (refer to [2025 grading policy](#))

Mandatory for U6-U9 mixed players. Managers and coaches agreed to. U10 above mixed and women's teams to pick up kit bags

### REGISTRATION FEES

Narrabeen FC has made the decision to keep registration fee increases at a minimum (in some age groups, fees have actually reduced) for the 2025 season, despite increases in operating costs to the club. Additionally we have streamlined the registration cost across age groups.

This has been made possible by operation efficiencies and relies on the support of sponsors, canteen sales and volunteers throughout the season.

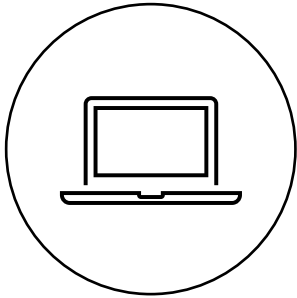
Age Group	Fee	Early bird (ends 8 Feb)
U6-U11	\$300	\$275
U12-U16	\$340	\$315
U18	\$400	\$375
U21	\$450	\$425
PL Men	\$475	\$450
PL Women	\$475	\$450
AL1	\$475	\$450
AL2+, O35, O45, WAL, W40	\$475	\$450

- You may also be eligible for the [Active Kids Voucher](#),
- Narrabeen FC retains the right to charge the following fees after registration:
  - Transfer to another club \$20
  - Deregistration or cancellation of registration \$20 + MWFA and other Association fees & Insurance Fees if applicable.



# 2025 Football Season

## Important information



Check [www.narrabeenfc.com.au](http://www.narrabeenfc.com.au) for club updates, policies, events, and match reports. The website also provides helpful information for parents, players, coaches, and managers. Follow Narrabeen FC on [Instagram](#) and [Facebook](#) for regular updates.



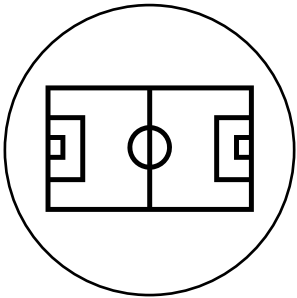
Players are provided with playing shirts and a team kit bag containing a first aid kit, match ball, and training balls. Details regarding jersey printing will be provided ahead of announcement day.

We encourage players to bring their own ball to bring to training. Size 3: U6 to U9, size 4: U10 to U13, size 5: U14 and older.

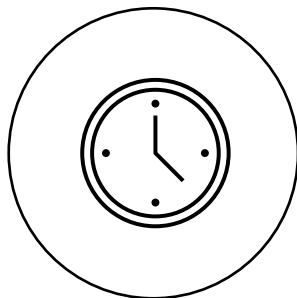


**All teams, must have two officials registered (typically a Manager and Coach) and issued with an MWFA registration card.** Senior teams require at least one non-player manager or coach. **All team officials MUST be registered via [www.playfootball.com.au](http://www.playfootball.com.au) before the season starts** (registration is free).

A [Working With Children Check](#) is mandatory for team officials (including coach and manager). WWC details must be provided to NFC through your free [Play Football](#) registration.

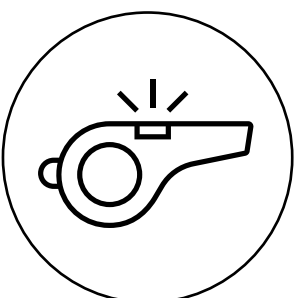


Playing fields are located from Avalon to Mosman and Forestville. Our home grounds are Boondah Reserve and Narrabeen Sports High School.

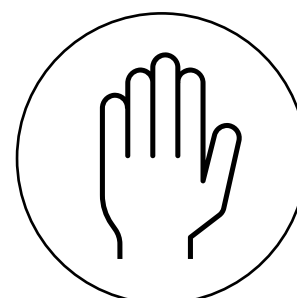


All playing times are determined by the MWFA. As a guide:

- U18 Div 1 mixed and women's: Friday evening
- U6-U16 mixed: Saturday mornings (up to 1pm)
- Senior men's: Saturday afternoon
- Women's: Sunday



All teams are required to provide at least one **team referee** (two in the case of U6-U7 playing Small Sided Games and senior men's) and attend the MWFA referees' instruction evening. Please note that if there are no volunteers for these the club **will not** register the team.



Narrabeen FC cannot function without the support of volunteers. All teams are expected to perform **volunteer work** throughout the season (including canteen and field duty) and all Managers are encouraged to be across all club communications to keep their teams informed.